

CENTENARY OF AUSTRALIA'S FIRST INTERNATIONAL HOCKEY MATCH

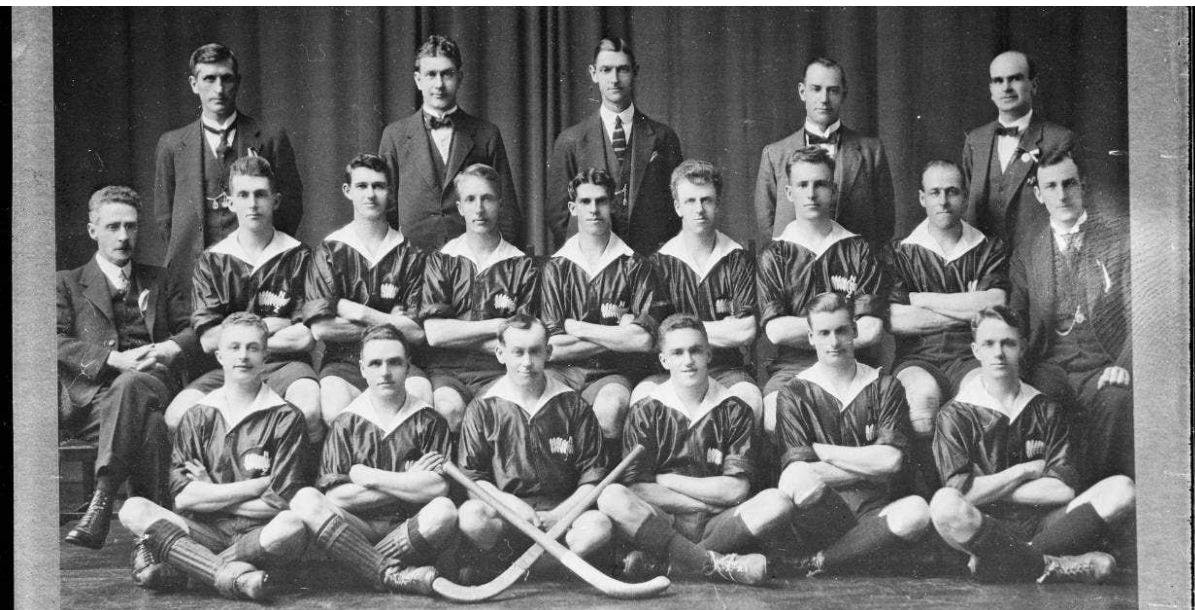
THE OPPONENTS

AUSTRALIA



1

NEW ZEALAND



¹ Playing in a "dark green shirt with gold sateen collar and pocket, blue serge shorts and green and gold socks" they were the first men's hockey team to represent Australia so the international was history-making for both nations.

THE TEAMS

AUSTRALIA

1922						Test Match	
						Showgrounds Palmerston North	
						HA Match #	1
						New Zealand	
HA #	Surname	Given Name	State	Position	Debut	27-Sep-22	
1	Abel	Julius	NSW	Half Back	1922	Captain	1
2	Ayling	Cecil	NSW	Full Back	1922		1
3	Craig	Arthur	NSW	Forward	1922		1
4	Elder	Ken	NSW	Forward	1922		1
5	Flockhart	Harold	NSW	GK	1922		1
6	Freeman	Percy	NSW	Half Back	1922		0
7	Grant	William	NSW	Forward	1922		0
8	Harry	Clarence	NSW	Half Back	1922		1
9	Harwood	Clarence	NSW	Full Back	1922		0
10	Hughes	Ken	NSW	Forward	1922	V C	1
11	Kendall	Victor	NSW	Forward	1922		1
12	May	Ralph	VIC	Half Back	1922		1
13	Nicklin	Sydney	NSW	Half Back	1922		1
14	Rogers	John	NSW	Forward	1922		0
15	Rothwell	Walter	NSW	Forward	1922	Manager	0
16	Seaman	Austin	NSW	Forward	1922		1
TEAM							11
Officials							
15	Rothwell	Walter	NSW	Manager			1
	Holland	Sydney	NZ	Umpire			1
	Hatch	Harold. J	NZ	Umpire			1

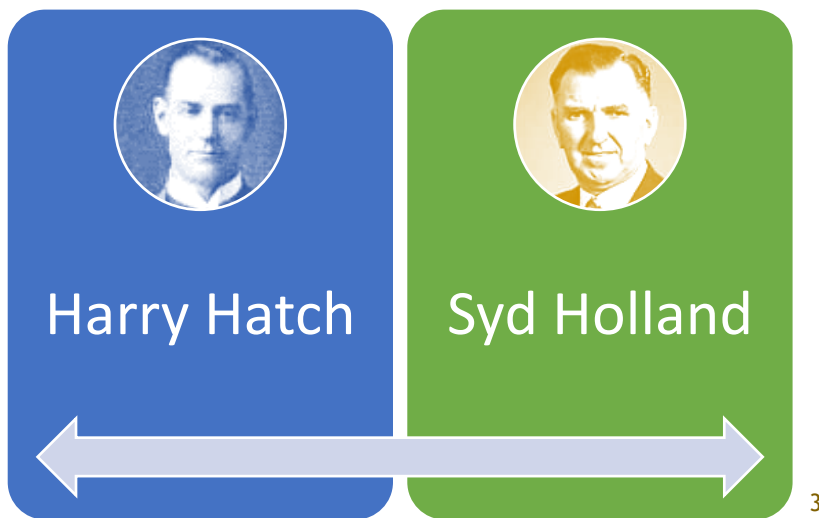
NEW ZEALAND

E. McLeod,
N.R. Jacobsen (vice-captain),
C. Johns,
E. Heaphy,
S.A. Mander,
P.G. Martin,
T. Watchman,
O.K. Perrin,
H. Snooks,
C. Watts,
W.L. Bell,
E. Watts.

THE PITCH



THE OFFICIALS



THE MATCH REPORT

A fair attendance, estimated at 1500, perhaps swelled by the public holiday granted, enthusiastically greeted both teams. According to the *Manawatu Standard's* match report “as the Australians appeared it broke forth into hearty applause, which throughout was strictly impartial.”

New Zealand made an excellent start, Auckland centre forward Eric Watts opening the scoring, with Heaphy and Bell adding two further goals to take New Zealand to a 3-0 half-time lead.

Seaman opened Australia's account shortly after half-time but Heaphy scored again to extend New Zealand's lead to 4-1. Australia were not done, however, Craig and Seaman scored in quick succession to take their team to within one goal

² Palmerston North Sportsground, now Fitzherbert Park

³ The match was refereed by Harry Hatch, after whom the famous Hatch Cup for primary schools is named and Sid Holland, later Prime Minister of New Zealand between 1949 and 1957.

of New Zealand. Watts then extended New Zealand's lead to 5-3 before Seaman scored his third goal, the match finishing in a 5-4 win to New Zealand.

New Zealand were somewhat fortunate to win, the correspondent's report asserting Heaphy was clearly off-side when he scored New Zealand's fourth goal.

Following the match both teams were entertained "at a complimentary dinner" which "concluded at a late hour". They, along with 80 couples, were then invited to a dance at Zealandia Hall on Broadway, which was decorated in green and gold in their honour. Shields with green and black halves, with the letter "A" on the green side and a silver fern on the black side adorned the walls. "Directly above were representations of the Kangaroo and Kiwi with crossed hockey sticks."⁴

⁴ From a report researched by Geoff Watson who teaches sports history at Massey University.